



# Beyond The Red Doors

Conshohocken United Methodist Church

August 2009 Newsletter

*“Conshohocken UMC exists to reach people of all ages, teach them Christ’s values and guide them as deeply committed Christians to show the world that God lives”*

Dear CUMC Family,

The last three Sundays of July, I presented a three-part sermon series titled “The God I’ve come to know”. It consisted of New and Old Testament scripture references that continue to show the church of today that God is a constant God but is always changing how His people share the Good News of Jesus Christ with others. In other words, what shall *and must* remain constant is the **message** of Christ, but the manner in which we reach out to others to receive that word *will* be different.

As many of you know, for the past couple of months, our worship service has been going through a transition in preparation for the two services CUMC will be offering beginning September 13<sup>th</sup>, 2009. The worship experience for the first Sunday of each month has been presented in a Traditional-Style; the last Sunday has been Contemporary-Style and the Blended-style worship has been presented in the Sundays in-between.

A couple members have asked why we are offering two services. I want to take the opportunity to provide a couple reasons:

- We’ve seen many visitors come through our doors and the majority share their worship experience when I speak with them. Most of them bring up the topic of the style of music presented at CUMC. Some have shared they prefer Traditional style (hymns/organ playing, creeds, prayers, etc), while others prefer Contemporary style (modern songs/worship leader(s), different instruments, etc.). This topic of conversation has also been shared by members of our wonderful church.
- It provides an option
- In offering two services, it will allow everyone (guests and members) to better identify what type of service they’ll be attending every Sunday.

- It is biblical - We are commissioned by God to make Disciples of Christ! In order to make disciples, we are to provide a *setting* and a *location* that will allow people to enter and participate.

One thing is certain, one “style” of worship service is not better than the other. In offering the two, we have the great potential of reaching more people for Christ and that’s why the church exists!

Another certainty is that this journey cannot be faced and achieved by one single person. It requires the CHURCH; not the building, but the PEOPLE!

The different areas of ministry in our church are working together to make this transition as smooth as possible. There are several questions that we don’t have answers to yet but we are moving forward and facing this new initiative head on. **NOTE: On Page 2, you will see the breakdown of each Sunday at CUMC beginning in September 13<sup>th</sup>.**

Most of us have heard of, or personally experienced, a church closing its doors in its community. There are many reasons why this takes place, but I am confident in saying that three reasons are because - they didn’t change with the community – they were afraid of change - they had a fear of failure. If our church is to experience growth, we ***must not*** fall under the same categories; especially the fear of failure.

Everyone is asked to pray, pray, pray! Then we must move beyond our prayers and put them into action as we serve in areas of ministry needing our physical and financial assistance.

We should take the time to thank God we have a building to worship our Lord and Savior Jesus Christ. Let us move beyond our comfortable settings and ask God for courage to invite others to worship with us.

God Bless,  
Pastor Ricky Ayala

## Sunday Mornings at CUMC beginning September 13<sup>th</sup>:

9:30 a.m.

Traditional/Blended Worship Service  
Sunday School (same time)

10:15 -10:40 a.m.

Coffee Fellowship Time (in Wesley Hall)

10:40 a.m.

Contemporary Worship Service

What to expect during:

- **Traditional/Blended** Service will have a more structured setting that allows the congregation to engage in worship through “call to worship”, invocations/unison prayers, creeds, hymns, offering, sermon, communion (1<sup>st</sup> Sunday of each month), etc.
  - There will be occasions that other instruments may accompany the organ/piano (such as guitar, flute or violin).
  - Laity are highly encouraged to participate in the worship life as liturgist, communion preparer/server, scripture reading, greeter, usher, etc.
  - Dress will be formal but can be casual
  - Pastor will wear a robe in most services
  - Pastor will administer the elements for communion with the assistance of one or two laity.
- **Sunday School** will take place during Traditional Service.
  - The kids will begin their time together in the Garden Room or Fellowship Hall.
  - Parents who have children but want to worship in the Traditional service may bring their children and drop them off with the “Safe Sanctuary Certified” volunteers to receive their spiritual nourishment.
- **Coffee Fellowship Time** will be offered in Wesley Hall in order to allow people leaving the first service (and those coming to the second service) an opportunity to see each other and spend a time of fellowship while drinking coffee, juice and/or eating baked goods.

- **Contemporary Service** will be led by worship leaders and accompanied by various musical instruments such as guitar, bass, drums, keyboard and (occasionally) brass instrument(s).
  - Dress will be casual but can be formal
  - Pastor will utilize the laity to administer the elements when communion is served
  - Laity (including children and youth) are highly encouraged to participate in the worship life as they serve making announcements, communion preparer/server, scripture reading, greeter, usher, etc.
  - The service will have an order but will change frequently to allow various forms of worship to include plays/drama/skits, special testimonies/singing, liturgical dance, the arts, etc.

### What opportunities are available for people from both services to be together?

The leaders have discussed a couple ways to answer this question. One way is take advantage of the Coffee Fellowship Time every Sunday from 10:15-10:40 a.m. (read lower left bullet-point on this page).

Another way was to provide a “Combined Service” on the first Sunday of every month that has five Sundays in it (and other special occasions).

For example: November 2009 has five Sundays. Therefore, our first combined service is scheduled for Sunday, November 1<sup>st</sup>.

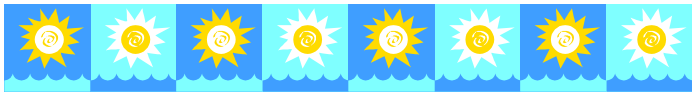
Last but not least, everyone is always encouraged to participate in the social gatherings such as the “Pot Luck Dinners”, BBQ/Volleyball, etc.

### What can the people expect on a Sunday like November 1<sup>st</sup>?

We will offer an All-Church-Breakfast in our Fellowship Hall *around* 9:30 a.m. In order to allow people of all ages to eat together, Sunday School will not be offered on this day.

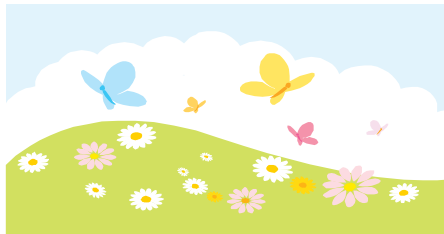
The All-Church-Breakfast and Combined service will cause a time change for *both* services.

The service will begin *around* 10:15 a.m. in our sanctuary. This service will consist of Contemporary and Hymn selections. If anyone misses out on eating/fellowshipping in the breakfast, they will have the opportunity of coming together for communion at the Lord’s Table during the service!



## SUMMER WORSHIP TIME

Our worship service begins at 9:30 a.m.  
This time will remain throughout the summer months  
until September 13<sup>th</sup>..



### Thinking of You

Each month, Ginny Teaford will be highlighting a homebound member of our church family. Please consider sending a personal note or a “Thinking of You” card to brighten that persons spirits.

This month's member is:  
Etta DiRenzo  
34 Sugar Maple Lane  
Lafayette Hill, PA 19422

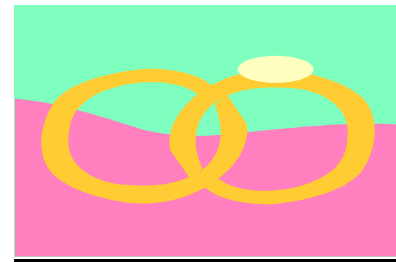


### **NEED A HALL TO RENT?** **Church Members, Special Guests,**

**Families, Friends:**

- **BIRTHDAY PARTIES**
- **BRIDAL SHOWERS**
- **BABY SHOWERS**
- **WEDDING PARTIES**
- **MEETINGS**

For more details, contact Joni McCormick, our Facility Coordinator at 610-828-1250 or [jonimcc@verizon.net](mailto:jonimcc@verizon.net)



## August Wedding Anniversaries

8/25 Bob & Irene Wise

If you are having an anniversary in August are not listed here, that means we do not have a record of your wedding anniversary. Please call the church office with that information.

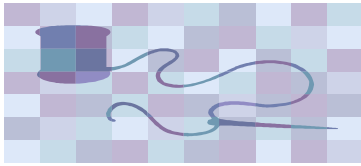
**August Birthdays!**  
**~Make A Wish~**

**Day:**

7	Michelle Conner
8	Devon Skiles
14	Jannineris Ayala Brittany Conquest
18	Lee Guagliata
22	Gary Black
23	Ruth Thomas
29	Kevin Lawrence Sr.
29	Amy Altieri

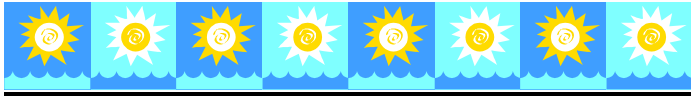
If you are having a birthday in August and are not listed here, that means we do not have a record of your birth date. Please call the church office with that information. We want to wish you a happy birthday!





### NEEDLEWORK CIRCLE

The quilts made by the Needlework Circle are now given to Mercy Suburban hospital babies at risk. Formerly, they were shipped to a Phila. address which became too costly.



### CUMC Fun-draiser

**When:** Saturday, June 13th  
**Time:** 10 a.m. -1 p.m.  
**Where:** 6<sup>th</sup> Ave side of church

**Help is needed** to cover various areas of the car wash stations. Lunch will be provided!!!

Stations include:

- Holding signs for potential customers
- Tires
- Pre-wash
- Soap/Clean
- Rinse (w/ pressure washers)
- Drying

Please call Pastor Ricky at 267-438-4234 to let him know you are planning to attend. Thank you!



All Church Yard Sale- Article for Beyond the Red – August issue

All Church Yard Sale

Mark the date Sat. Sept. 26, 2009

Time- 8 AM- 1 PM

We hope you have started looking for items that you no longer use or need, and can be used by someone else.

Please mention the event to family, neighbors, and friends. They may have something to donate or might save the date and come to participate.

Put the date on your calendar and plan to participate (if you can't help on Sat, maybe you can help during the week)

Items that were a hit last year- books, furniture  
Things that did not sell – cassette tapes

We are looking for – furniture, children's toys, books clothes, household items and baked goods.

Can you believe we are less than two months away for the date- We need volunteers to work in the morning and also to come help clean up at the close. Contact Sue Kriebel 610-828-6479 or Nancy Maguire 610-828-0311.





## FINANCE CORNER

Giving statements were mailed out for the first six months of 2009. If you did not receive a statement, or if you have questions about your statement, please contact Bill Pope, 610-828-1084.

Commitment Sunday for 2010 is scheduled for October 11, 2009. Keep your eyes open for mailings discussing the 2010 stewardship campaign in August as well as discussions of the campaign in September.

### ***2009 Finance Update:***

As of June 30 our total contributions received (including Jubilee rent and dividends) were \$104,442, and our total expenses were \$121,368, resulting in a deficit for the first half of 2009 of \$16,926.

CUMC has taken some very drastic steps to date to reduce our expenses. On April 14, CUMC was forced to borrow \$15,000 at 8.5% to fund current operations. Starting in April, the church has been paying interest ONLY on the Conference loan amounting to \$1,096 per month instead of \$3,415. We have stopped paying the world service fund and connectional ministries fund allocations from the Conference (\$1,042 per month). All teams and programs were asked to reforecast their 2009 cash needs and cut expenses. Effective July 1, the conference increased the health insurance premiums paid by CUMC for the Pastor from \$14,365 to \$16,500.

On a positive note, Jubilee has committed to continue to rent space from us through the remainder of 2009 and the conference reduced the interest rate on our \$228,000 conference loan from 6.5% to 5.5%. CUMC had been repaying \$3,415 a month, but starting in April, we are paying interest only and deferring the principal until our financial situation stabilizes. These principal payments will be added to the end of the loan, extending the repayment period through 2015.

The Finance Team has revised the 2009 budget to reflect the above facts and actual expenses to date and has projected expenses for 2009 of \$263,000. CUMC's fixed income from rent and dividends is \$44,000. The remainder of the church's income needed to pay expenses is collected from tithes and offerings, and fund raisers.

What does this mean to you? Let's break this down into an average week at CUMC. Average weekly expenses total \$4,270 and debt repayments total \$788, for total cash spend of \$5,058. CUMC receives \$845 a week in fixed income and averages \$250 from fundraisers. Tithes and offerings account for the \$3,963 remainder. However, for the first half of 2009, our weekly tithes and offerings have averaged \$3,292. We can bridge this gap in two ways – 1. increase our attendance and those giving to our church and 2. increase our individual giving.

We have witnessed 20 new members join CUMC in 2009 and our attendance at Sunday worship has been in the 90-110 range. Our children's Sunday School, The God Squad, averaged 36 children and adults last year. CUMC is offering 2 worship services starting in September. These are all encouraging signs but we must all continue to reach out to our communities, spread God's word, make disciples of Christ, and bring people to our church. With all these exciting changes, we cannot lose sight of who we are today; we must continue to ensure that our current church family is nurtured and their needs are being fulfilled. To be successful in both of these endeavors, CUMC has to have a balanced budget that allows the missions, programs, and activities of this church to continue and our church to flourish.

The Finance Team asks that you prayerfully consider your contribution level, read the Bible for guidance, and ask our Lord to direct your thoughts, your actions, and your giving patterns. We know some members have more time to give, some have more talents they can offer, and some have more money, and we ask that you continue to support CUMC in any way that the Holy Spirit leads you.



## **CHRISTIAN EDUCATION**

### **Sunday School Summer Sabbatical**

Sunday School and Kid's Worship Time are on sabbatical until September 13, 2009.

### **Sunday School Volunteers:**

An important meeting will take place in early August in order to prepare for the start of Sunday School in September. Please listen to the announcements in the beginning of the worship service for further details. Personal contact which may include a phone call will be made by team leader(s) or members.

### **Wawa Hoagie Coupons \$3.50each**

The Sunday school children are still selling Wawa coupons to support the Courage to Care Campaign. The coupons sell for \$3.50ea (that's a savings of .40 per hoagie) and the coupons do not expire. Coupons will be available downstairs, outside of the secretary's office. Thank you for your support.

### **Children's Sunday**

If your child, youth, or teen is interested in participating in worship service, please contact Pastor Ricky. The children are always encouraged to participate by reading a scripture passage, playing an instrument, singing, or displaying any other talent they wish to share.

### **Pillowcases**

Pillowcases are available now for children who are ill. This program was initially started with the Courage to Care campaign. We make and deliver pillowcases to patients at the Children's Hospitals, but we would also like to offer it to our congregation as well. If you have or know a child that would benefit from a homemade pillowcase, please contact Michele Conner at [the.conner.clan@comcast.net](mailto:the.conner.clan@comcast.net).



Administrative Board Meeting in 2009:  
10/14

Note: The above date is a regularly scheduled meeting. *There may be one more* before the Charge Conference.

Please take the time to thank the individuals who answered the "call to serve" in the areas of ministry at Conshohocken UMC. Their names are located in the back of the worship service bulletins. May God continue to provide us with His love and guidance as we wholeheartedly strive to serve Him.

***CUMC IS THE  
PLACE TO BE!!!***

**Worship Service(s) Questionnaire**

Beginning September 13<sup>th</sup>, 2009, Conshohocken UMC will offer two Worship Services to our community.

The breakdown for Sunday Mornings at CUMC is as follows:

**9:30 a.m.**

Traditional/Blended Worship Service  
Sunday School (*offered at the same time*)

**10:15-10:40 a.m.**

Coffee Fellowship Time at Wesley Hall

**10:45 a.m.**

Contemporary Worship Service

In preparation for these services, our Worship Team has discussed having a hospitality and order-of-worship workshops in the month of August.

Please indicate if you are interested in serving in the hospitality and/or order-of-worship areas by writing your contact information, what service you and your family plan on attending and where you're most interested in serving the Lord and people of God during worship. (*below*)

**Contact Information**

Name \_\_\_\_\_

Phone number# \_\_\_\_\_

Address \_\_\_\_\_

\_\_\_\_\_

E-mail \_\_\_\_\_

**Worship Service** (*Please check all that apply*)

\_\_\_\_ 9:30 a.m. Traditional/ Blended Service

\_\_\_\_ 10:45 a.m. Contemporary Service

**I would like to serve the Lord and the people of God in the:**

\_\_\_\_ Hospitality Team

(*Greeters, Welcoming of Member and Special Guests  
and/or Parking Ministry*)

\_\_\_\_ Order-of-Worship

(*Video/Visual Aide {tech team}, Announcements, Greetings,  
Scripture Reading, Children's Moment, Prayers, Head Usher, Usher, Singing, Musician,  
Drama/skits, etc*)



## Coughochockon United Methodist Church

30756 Sixth Avenue  
Coughochockon, PA 19128  
(610) 538-1707

### **2009 CUMC Personnel Information**

#### **Staff**

Pastor – Jose “Ricky” Ayala (w) 610-828-1250 [pastorricky@verizon.net](mailto:pastorricky@verizon.net)

*In Case of Emergency or Hospital Visit*, call Pastor Ricky’s cell at 267-438-4234

Admin Assistant/Facility Coordinator – Joan McCormick 610-828-1250 [jonimcc@verizon.net](mailto:jonimcc@verizon.net)

Sexton – Bob Maziarz 610-825-0563 [maze1958@verizon.net](mailto:maze1958@verizon.net)

#### **Teams**

**Lay Leader** - Rick Barton 610-397-1581 [rickdbarton@msn.com](mailto:rickdbarton@msn.com)

**People Chair**- Dr. Gary Atkinson 610-828-8946 [gary.atkinson@verizon.net](mailto:gary.atkinson@verizon.net)

Members: Sally Hilton, Edward Bernier, Lee Guagliata, Lawrence Ogunkua, Rick Barton

**Ministry Chair** - Gregory Kriebel 610-828-2039 [gckriebel@comcast.net](mailto:gckriebel@comcast.net)

Members: Nancy Maguire

**Christian Education Director** – Christine Bertino 610-828-3085 [christine.bertino@gmail.com](mailto:christine.bertino@gmail.com)

Members: Lila Backenstose, Joanne Lapinski, Michele Conner, Dyan Rhoads, Michele Mitchell

**Finance Chair**- Carleton Cox 610-327-0552 [coxmaps@worldnet.att.net](mailto:coxmaps@worldnet.att.net)

Treasurer: Jennifer Kriebel 610-828-2039 [jennmyers13@hotmail.com](mailto:jennmyers13@hotmail.com)

Finance Secretary: William Pope, 610-296-3838 x1343 [bill.pope@McKesson.com](mailto:bill.pope@McKesson.com)

Members: Richard Barton, Chan Crawford

**Worship Chair**- Dr. Bukola Ogunkua 610-272-0537 [bukogunkua@aol.com](mailto:bukogunkua@aol.com)

Members: Stephanie Williams, Mark Atkinson, Anita L. Barton, Irene Wise

**Administrative Council Chair**- Jake Kriebel 610-828-6479 [jakekriebel@comcast.net](mailto:jakekriebel@comcast.net)

Administrative Council Recording Secretary: Randi Wright

**Property Team Chair**- James Lapinski 215-768-6472; 610-834-0715 [jr1001@verizon.net](mailto:jr1001@verizon.net)

Members: Jim Smith, Ann Waters, Robert Maziarz, Dennis Hannan

#### **Programs**

Media Relations Coordinator: Lyn Barr 610-213-5161 [kneetitup@msn.com](mailto:kneetitup@msn.com)

Nursery Coordinator (during service): Judy Rhoads 610-275-3125 [jrhoads119@comcast.net](mailto:jrhoads119@comcast.net)

Health & Welfare Ministries Coordinator: Virginia Teaford 610.828.9792 [vgin40@msn.com](mailto:vgin40@msn.com)

Membership Secretary: Ruth Thomas 610-941-4392 [manda3724@aol.com](mailto:manda3724@aol.com)

Church Historian: Dr. Gary Atkinson 610-828-8946 [gary.atkinson@verizon.net](mailto:gary.atkinson@verizon.net)

Beyond the Red Doors Newsletter: Anna Hoffman 484-684-7335 [amhoffman507@comcast.net](mailto:amhoffman507@comcast.net)